



Rubinerterre Italiane Velatta SpA

———— since 1950 ————

>> YOU need the BEST

TECHNO
PROFESSIONAL

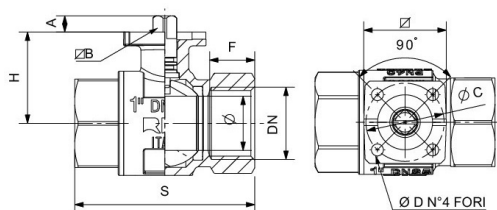
Series



RIV 4500

Ball valve F/F heavy type
 full bore
 ISO 5211 mounting pad for
 actuator

» Tech drawings and tables



DN	Codice	Ø	H	S	F	A	C	ISO 5211	ØD	ØB	PN	KG	P/box	
1/2"	024500000004	15	31	59	17	7	36	M1 (F03)	5,5	38	9	40	0,290	14
3/4"	024500000005	20	37	69	18	8	36	M1 (F03)	5,5	38	9	40	0,429	10
1"	024500000007	25	41	83	22	8	36	M1 (F03)	5,5	38	9	40	0,677	6
1"1/4	024500000008	32	46,5	94	24	14,5	50	M4 (F05)	6,5	50	14	40	1,103	6
1"1/2	024500000009	40	58	102	24	14,5	50	M4 (F05)	6,5	50	14	40	1,339	4
2"	024500000011	50	65,5	124	28	14,5	50	M4 (F05)	6,5	50	14	40	2,172	4

»» Approvals



»» RIV Rubinetterie Italiane Velatta S.p.A
Via delle Acacie 8 Zona Industriale D4
P. O.Box 64
28075 GRIGNASCO (NO) ITALY
Tel +39 0163 4151
Fax +39 0163 411914

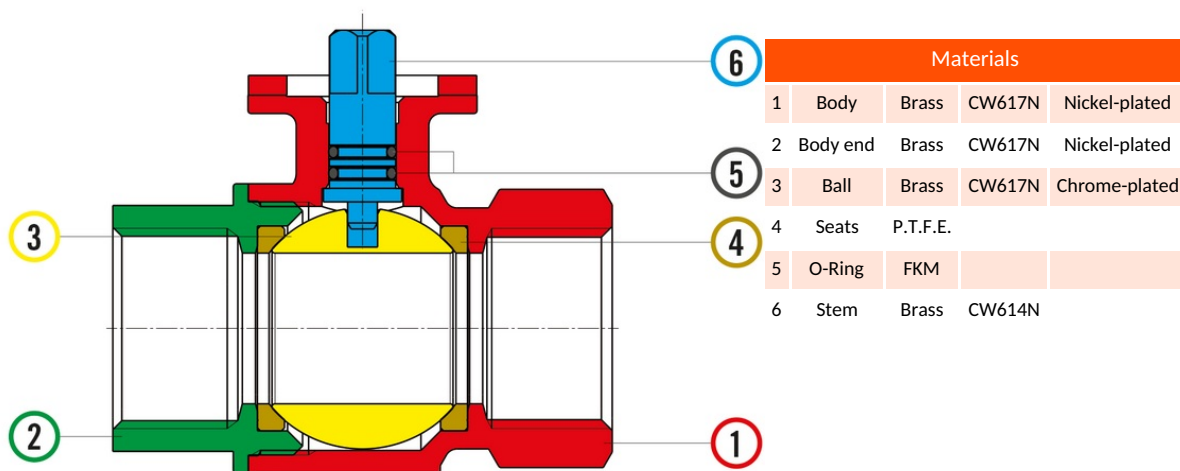
»» Capitale sociale € 516.000 i.v.
Reg. Imprese di Novara N° 00469610026
R.E.A. di Novara N° 170397
Numero Meccanografico NO009263
Codice Fiscale 00469610026
Partita IVA IT 01399720034

»» E - mail riv-vg@riv-vg.com
vendite.italia@riv-vg.com
export.sales@riv-vg.com
Web www.riv-vg.com



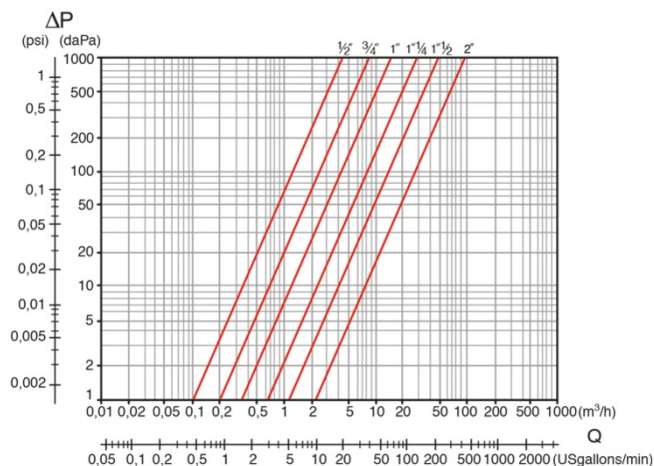
>> Technical data

RIV 4500

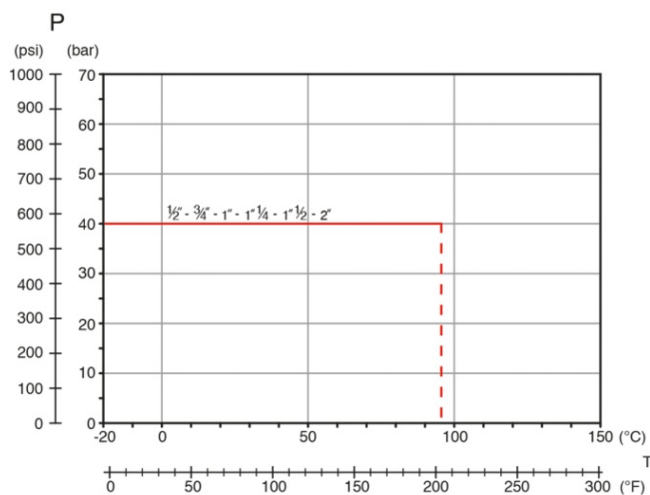


Connection	ISO 228/1
Limit	-20°C (without liquid) +95°C
Notes	The max. working pressure (PN) means at a room temperature of about 23°C.

» Pressure Loss Chart



» Temperature/Pressure



»» **More Products**



RIV 4518

Electric actuator 12 V
alternate current
ISO 5211 connection



RIV 4519

Electric actuator 24 V
alternate current
ISO 5211 connection



RIV 4521

Electric actuator 220/230 V
alternate current
ISO 5211 connection



RIV 4525

Electric actuator 12 V
direct current
ISO 5211 connection



RIV 4526

Electric actuator 24 V
direct current
ISO 5211 connection



RIV 4545

Double-acting pneumatic actuator
ISO 5211 connection